

TIIG
INJURY SURVEILLANCE IN THE NORTH WEST OF ENGLAND

Blackpool Victoria Hospital Emergency Department

Monthly Bulletin: October 2012 to September 2013

This bulletin provides a breakdown of all attendances¹ at Blackpool Victoria Hospital Emergency Department (ED) between October 2012 and September 2013.

During this twelve month period there were 82,367 attendances to Blackpool Victoria Hospital ED. July 2013 had the highest number of attendances (7,520) (**Figure 1**).

There were fractionally more male than female attendees presenting at Blackpool Victoria Hospital ED between October 2012 and September 2013 (males=41,705; 51%) (**Figure 1**). **Figure 2** illustrates the age group of ED attendances for each month. A third (33%) of attendees were aged 60 years or more (n=27,415), followed by 31% aged 30-59 years (n=25,758).

The source of referral to the ED is detailed in **Table 1**. Most ED attendees were either referred by an emergency call or ambulance (n=36,296; 44%) or self-referred (n=31,714; 39%).

Table 2 shows the patient group of attendances between October 2012 and September 2013. The majority (92%) of attendances were categorised as 'other' (including other injury and medical attendances) (n=75,662). Overdose and poisoning (n=2,002), sports injury (n=1,878) and assaults (n=1,347) all accounted for 2% of attendances.

Almost two-thirds (65%) of incidents occurred in the home (n=53,163) (**Table 3**). In addition, 16% occurred in a public place (n=12,826).

The discharge destination for ED attendances is displayed in **Table 4**. Over half (56%) of attendees were discharged (n=45,867), with over a quarter (26%) admitted to hospital (n=21,297) and 10% referred for further treatment (n=8,452).

Assault attendances

Between October 2012 and September 2013 there were 1,347 assault attendances to Blackpool Victoria Hospital ED.

There were significantly more males than females presenting at the ED with assault-related injuries (males=1,019; 76%) (**Figure 3**).

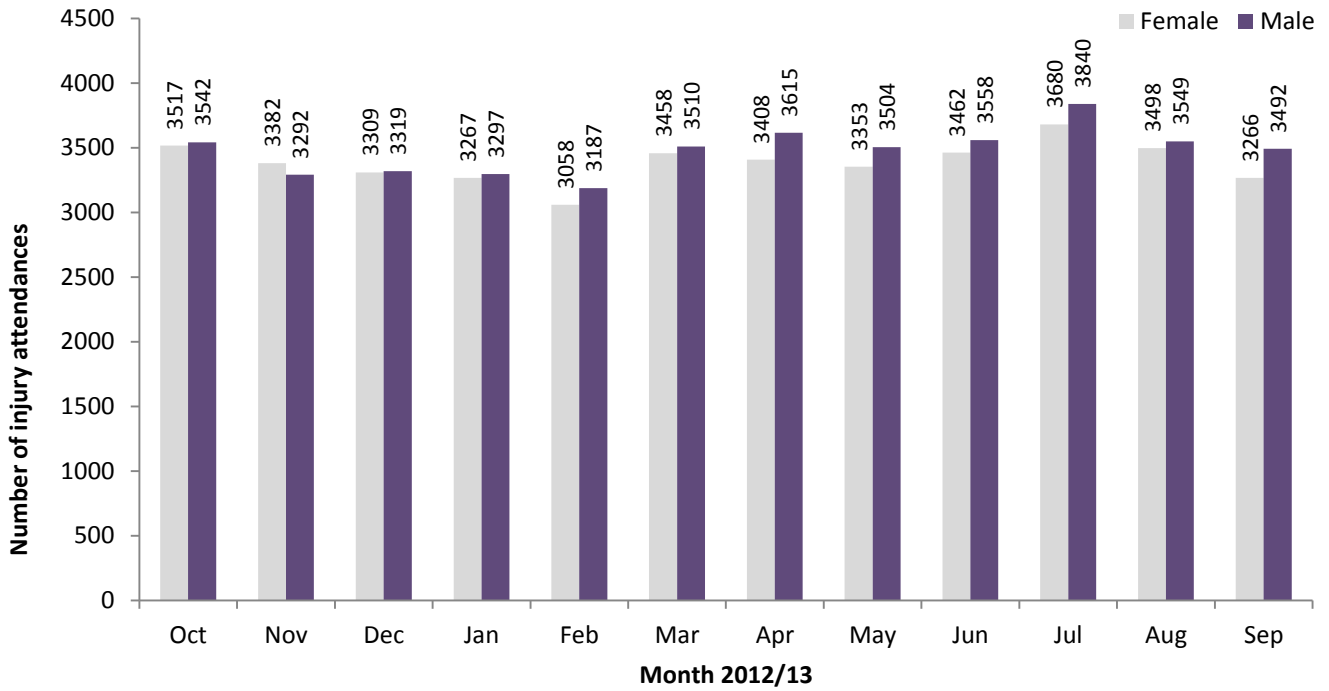
Table 5 details the age group of assault attendances for each month. The majority of attendees were aged 15-29 years (n=722; 54%), followed by 40% aged 30-59 years (n=535).

The location of assault is shown in **Table 6**. Over half (55%) occurred in a public place (n=741), with almost a quarter (23%) occurring in the home (n=315).

Table 7 illustrates the discharge destination for assault-related injury attendances to Blackpool Victoria Hospital ED. Over seven in ten (71%) were discharged with no follow-up treatment required (n=958) compared to 12% who required follow-up treatment (n=166).

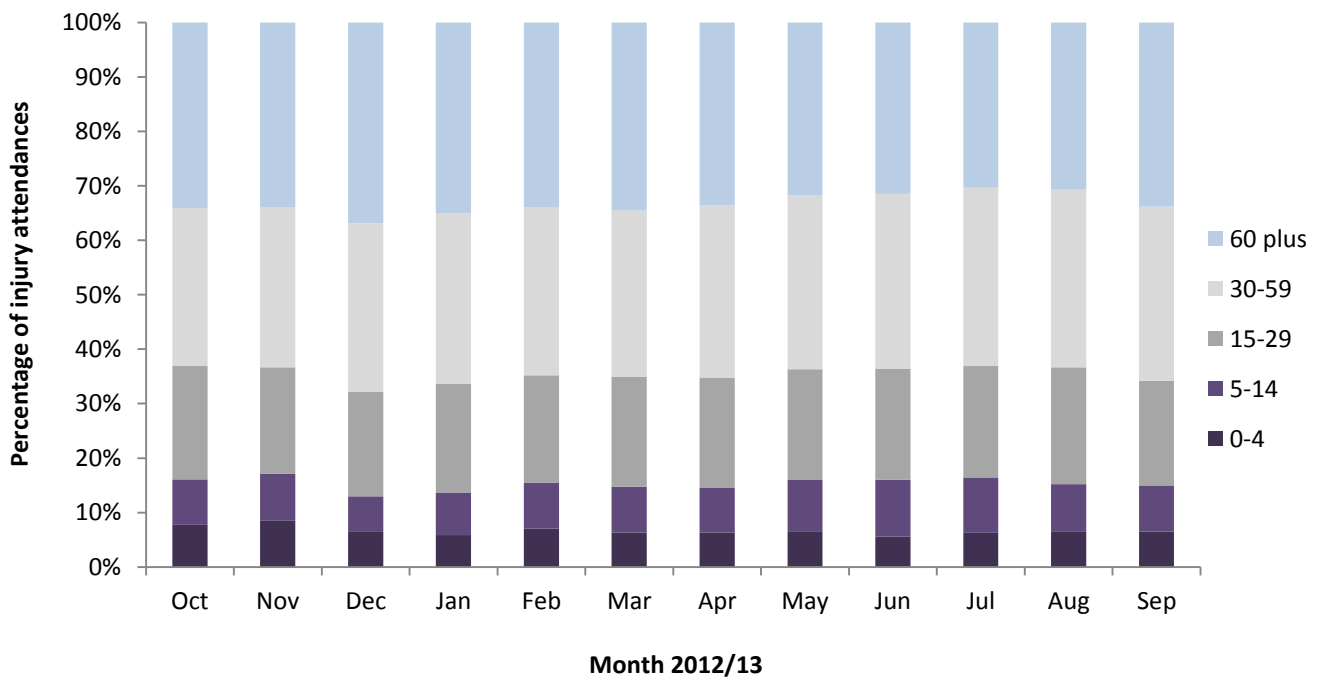
¹For other EDs TIIG reports on injuries only, however, this report includes all attendances at Blackpool Victoria Hospital ED. This is due to the medical and other injury attendances being categorised within the patient group 'other'.

Figure 1: Gender of ED attendances by month, October 2012 to September 2013*



* There were four attendances where the gender was unknown.

Figure 2: Age group of ED attendances by month, October 2012 to September 2013



* There were two attendances where the age was unknown.

Table 1: ED attendances by source of referral and month, October 2012 to September 2013²

Source of referral	Oct	Nov	Dec	Jan	Feb	Mar	Apr	May	Jun	Jul	Aug	Sep	Total	%
Emergency call/ ambulance	3074	3018	3242	3006	2880	3124	3033	2931	2986	3125	2962	2915	36296	44
Self-referral	2771	2421	2249	2382	2214	2557	2772	2857	2808	3102	2853	2728	31714	39
Health care provider	681	696	701	653	622	797	679	658	747	744	728	671	8377	10
General Practitioner	253	280	185	260	248	260	269	176	173	233	218	198	2753	3
Other	82	91	93	92	97	106	103	94	127	132	116	124	1257	2
Police	64	54	62	60	56	39	50	29	40	60	58	35	607	1
Employer	46	45	40	46	50	40	46	39	57	45	54	32	540	1
ED staff	43	39	28	24	32	16	35	33	39	45	49	36	419	1
Educational establishment	<45	<35	28	42	43	<30	30	33	37	24	0	<20	356	0
Prison service/court	0	0	0	0	0	0	<10	***	6	<10	<10	***	31	0
General dental practitioner	***	0	0	0	***	***	***	***	0	***	***	0	<20	0
Local authority/social services	0	***	0	0	***	0	0	0	0	0	0	0	***	0
Total	7061	6675	6628	6565	6245	6968	7023	6857	7020	7520	7047	6758	82367	100

Table 2: ED attendances by injury group and month, October 2012 to September 2013*³

Injury group	Oct	Nov	Dec	Jan	Feb	Mar	Apr	May	Jun	Jul	Aug	Sep	Total	%
Other injury	6413	6121	6126	6047	5741	6377	6462	6299	6473	6907	6506	6190	75662	92
Overdose and poisoning	190	155	162	166	160	173	133	169	161	213	170	150	2002	2
Sports injury	179	156	84	144	167	181	221	174	147	134	123	168	1878	2
Assault	137	108	131	82	73	117	100	101	124	133	132	109	1347	2
Road traffic collision	112	99	110	93	86	97	87	90	90	107	92	110	1173	1
Deliberate self-harm	30	36	15	33	18	23	20	24	25	26	24	31	305	0
Total	7061	6675	6628	6565	6245	6968	7023	6857	7020	7520	7047	6758	82367	100

* Due to low numbers, firework injuries have been included in the 'other injury' category (n=20).

Table 3: ED attendances by location of incident and month, October 2012 to September 2013*

Location	Oct	Nov	Dec	Jan	Feb	Mar	Apr	May	Jun	Jul	Aug	Sep	Total	%
Home	4254	4363	4612	4472	4163	4713	4556	4262	4452	4685	4449	4182	53163	65
Public place	1092	872	859	820	832	1041	1071	1124	1166	1400	1380	1169	12826	16
Other	1246	1020	850	907	859	789	1063	1042	974	1008	932	1035	11725	14
Workplace	263	223	197	209	215	218	214	248	246	277	275	232	2817	3
Educational establishment	206	196	110	157	176	207	119	179	182	150	11	140	1833	2
Total	7061	6675	6628	6565	6245	6968	7023	6857	7020	7520	7047	6758	82367	100

* There were three attendances where the incident location was unknown; these have been included in the total figure.

Table 4: ED attendances by discharge destination and month, October 2012 to September 2013

Discharge destination	Oct	Nov	Dec	Jan	Feb	Mar	Apr	May	Jun	Jul	Aug	Sep	Total	%
Discharged	3824	3622	3593	3564	3340	3950	3883	3992	4018	4254	3982	3845	45867	56
Admitted	1927	1770	1929	1822	1824	1861	1858	1617	1703	1679	1661	1646	21297	26
Referred	752	709	589	655	630	645	657	751	760	861	772	671	8452	10
Incomplete treatment	297	309	246	251	216	273	356	290	333	463	372	331	3737	5
Transferred	151	137	169	178	156	171	188	148	152	185	187	193	2015	2
Other	88	97	65	72	54	46	57	47	39	62	50	56	733	1
Died	22	31	37	23	25	22	24	12	15	16	23	16	266	0
Total	7061	6675	6628	6565	6245	6968	7023	6857	7020	7520	7047	6758	82367	100

² Please note that all numbers less than five have been suppressed (with ***) in line with patient confidentiality. If there is only one number less than five in a category then two numbers will be suppressed to prevent back calculations from totals.

³ In December 2010, the overdose and poisoning injury group was removed due to a change in the ED's IT system. Since this time, cases have been categorised into one of the other injury groupings (other injury, deliberate self-harm or firework injury). Such cases are, however, identifiable via another data field: presenting complaint. Where the injury group is recorded as 'other injury' and presenting complaint is recorded as 'overdose and poisoning' these cases have been categorised in this table as overdose and poisoning. Please note, during this period 11 deliberate self-harm cases also had overdose and poisoning recorded as their presenting complaint.

Assaults

Figure 3: Number of ED assault attendances by gender and month, October 2012 to September 2013

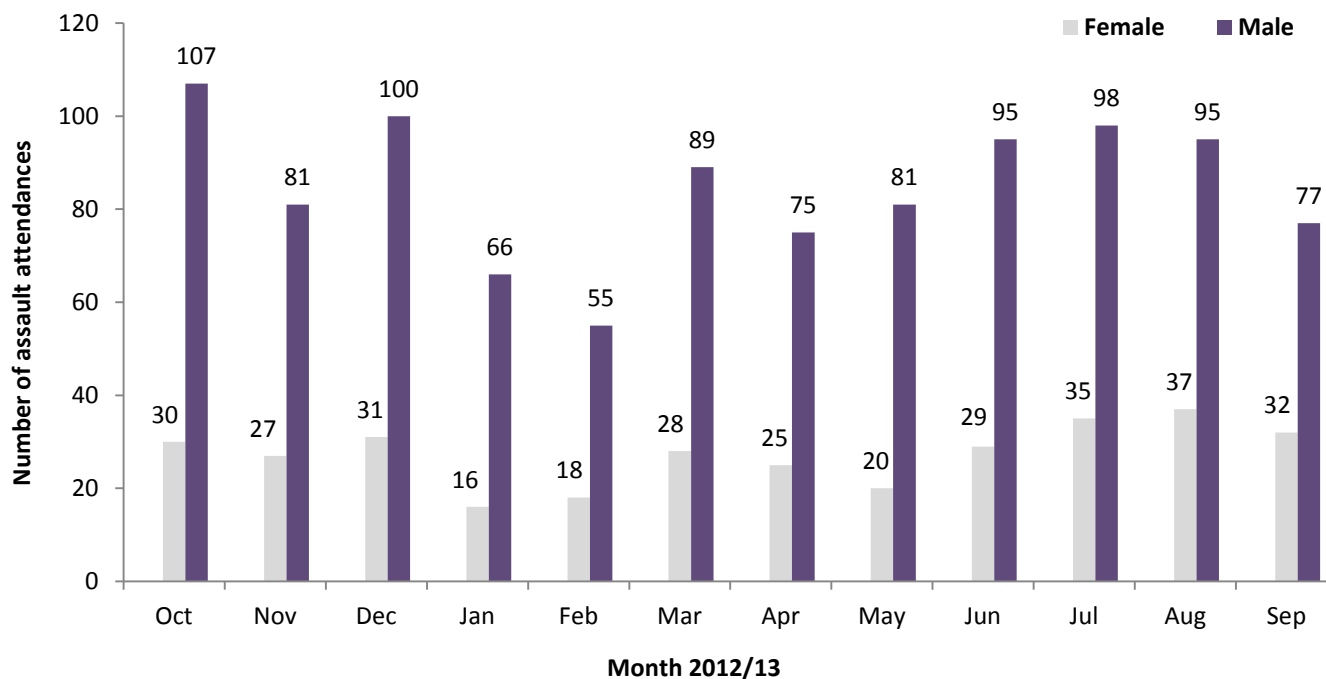


Table 5: ED assault attendances by age group and month, October 2012 to September 2013*⁴

Age group	Oct	Nov	Dec	Jan	Feb	Mar	Apr	May	Jun	Jul	Aug	Sep	Total	%
5-14	5	<10	<10	***	***	<10	***	<10	5	<10	<10	<10	62	5
15-29	71	65	82	47	39	59	57	51	71	64	74	42	722	54
30-59	56	35	40	32	31	49	37	38	48	61	49	59	535	40
60 plus	5	***	***	***	***	***	***	***	0	***	***	***	28	2
Total	137	108	131	82	73	117	100	101	124	133	132	109	1347	100

* There were no assault attendances in the 0-4 age group.

Table 6: ED assault attendances by location of incident and month, October 2012 to September 2013⁴

Location	Oct	Nov	Dec	Jan	Feb	Mar	Apr	May	Jun	Jul	Aug	Sep	Total	%
Public place	68	68	67	48	37	64	48	52	62	84	86	57	741	55
Home	35	19	32	18	17	29	23	23	33	27	27	32	315	23
Other	28	14	20	13	13	17	21	16	20	15	13	11	201	15
Workplace	***	***	<10	***	***	***	<10	<10	<10	7	6	<10	61	5
Educational establishment	***	***	***	***	***	***	***	***	***	0	0	***	29	2
Total	137	108	131	82	73	117	100	101	124	133	132	109	1347	100

Table 7: ED assault attendances by discharge destination and month, October 2012 to September 2013⁴

Discharge destination	Oct	Nov	Dec	Jan	Feb	Mar	Apr	May	Jun	Jul	Aug	Sep	Total	%
Discharged	97	73	92	62	55	85	69	63	99	91	96	76	958	71
Other	22	18	22	8	8	14	10	17	18	22	20	15	194	14
Follow-up	13	<20	<20	<10	10	<15	<20	15	<10	<20	<20	<20	166	12
Admitted	5	***	***	***	0	***	***	6	***	***	***	***	29	2
Total	137	108	131	82	73	117	100	101	124	133	132	109	1347	100

Published October 2013

Karen A Critchley (née Swarbrick) – TIIG Researcher/Analyst
 Centre for Public Health, Faculty of Education, Health and Community, Liverpool John Moores University,
 2nd Floor, Henry Cotton Building, Liverpool L3 2ET

T: 0151 231 4498 | E: K.A.Swarbrick@ljmu.ac.uk | W: www.tiig.info and www.cph.org.uk

(Please note data requests should be made through the TIIG website)

⁴ Please note that all numbers less than five have been suppressed (with ***) in line with patient confidentiality. If there is only one number less than five in a category then two numbers will be suppressed to prevent back calculations from totals.